



Published on *Property in Bulgaria Apart Estate* (<https://apartestate.com>)

Apartment with a sea view in Elenite



Offer №:

804

Price:

59900 €

Area:

75 m²

Price per m²:

799 €

District:

Burgas

Place:

Elenite

Type of property:

One-bedroom apartment

Form of property:

Investment property

Use permit (Act 16)

Old construction (resale)

Floor:

6 floor

Number of bedrooms:

1

Number of toilets/bathrooms:

1

Furnishings:

Furnished

Distance to the airport:

30-40 km

Distance to the sea:

up to 100 meters

Equipment:

boiler

Heating:

central air

Kitchen:

refrigerator

hot plates

aspirator

dining table

chairs

hanging wall cabinets

kitchen countertop

Leisure and infrastructure:

barbecue area

café

closed territory

parking

pool

rest zone

security

bus stop

restaurant / bar

pharmacy

grocery store

gas station

supermarket

Plans and spaces:

balcony

Location:

in a rural area (suburb)

in the seaside resort

next to the sea

Property for:

Seasonal living with the possibility of year-round use

Special recommendations:

gated communities

View:

partial sea view

beach view

city view

Maintenance fee:

10 euro/m2

Текст объявления:

We offer for sale a one-bedroom apartment on the first line of the sea in Elenite.

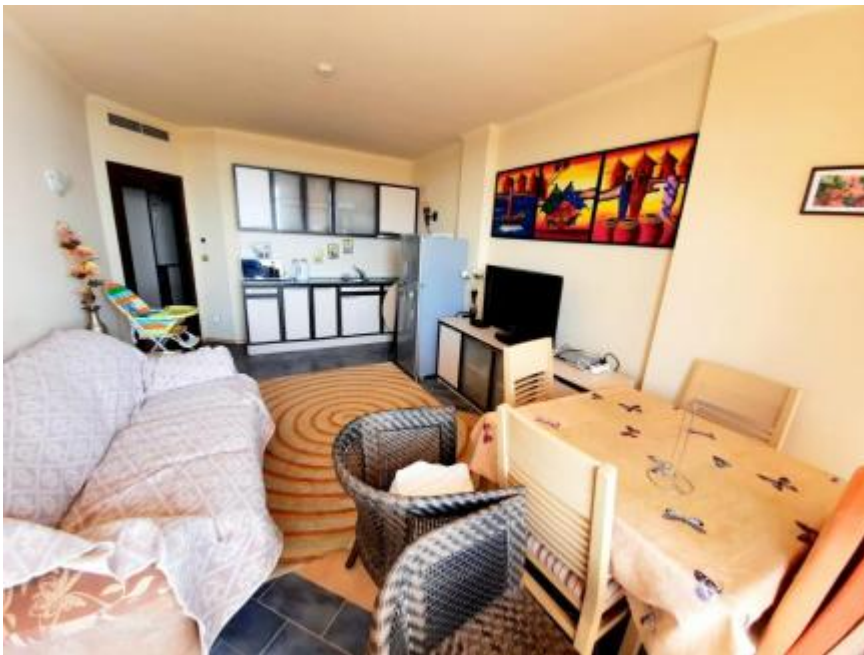
The Atrium complex is located on the first line of the sea in the resort village of Elenite, near the town of Sveti Vlas. Nearby there are shops, bars, cafes, restaurants and a water park.

Services and facilities of the complex: guarded territory with permanent security and video recording, outdoor pool, lobby bar, gym, spa center.

The 75 sq. m apartment is on the sixth floor of the building and consists of: living room with kitchen and dining zones, one bedroom, corridor, bathroom and balcony. The balcony offers a side view of the sea.

Appliances and equipment: kitchen set with hobs and hood, large fridge, dining table with chairs, sofa, TV stand, double bed with bedside tables, wardrobes, hallway wall with hanger. The bathroom is equipped with a boiler and a bathtub. Floor covering: laminate and ceramic tiles.

The apartment is suitable for permanent or seasonal living, for rent and investment









Source URL: <https://apartestate.com/en/catalog/apartment-sea-view-elenite>